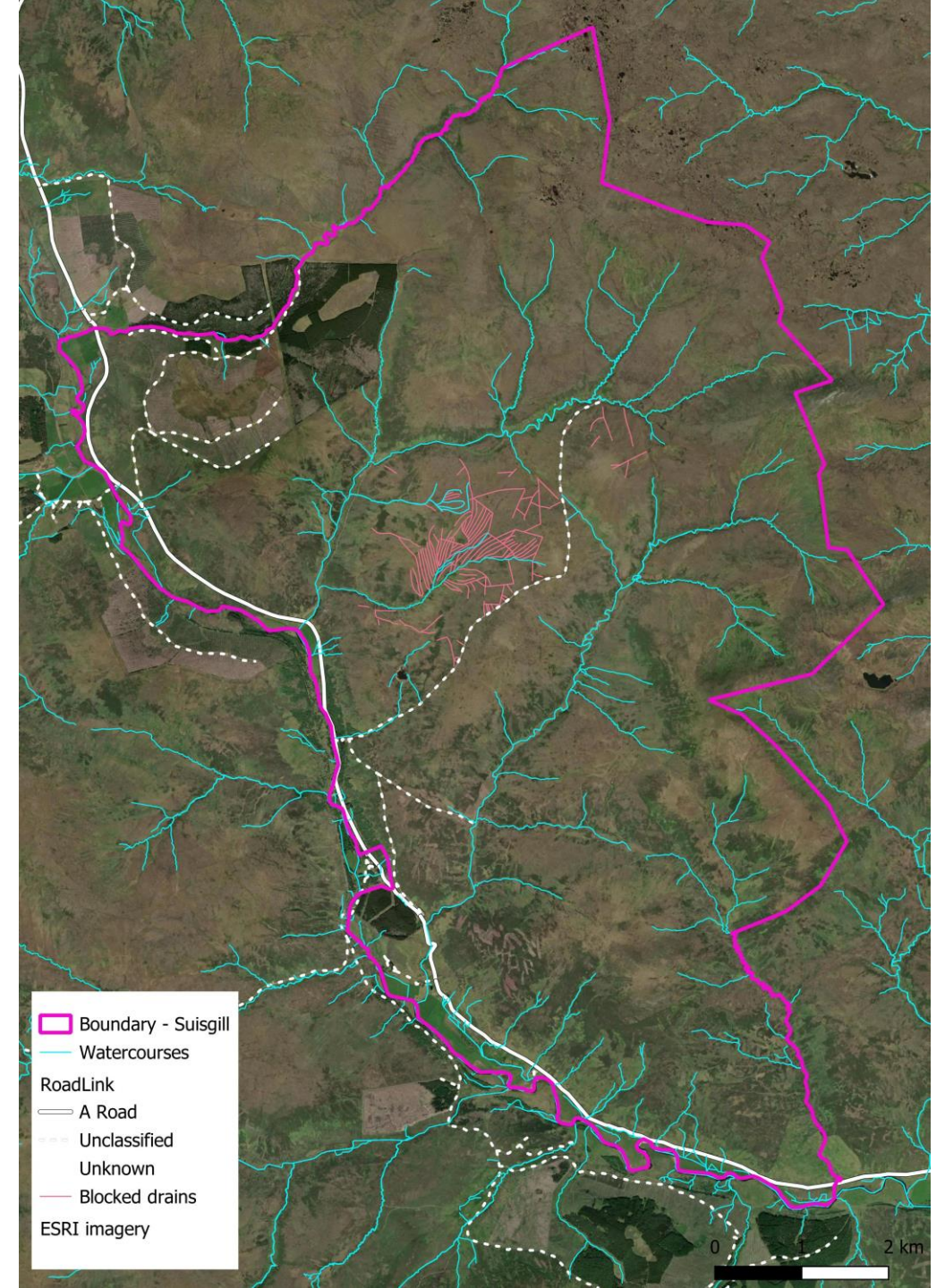
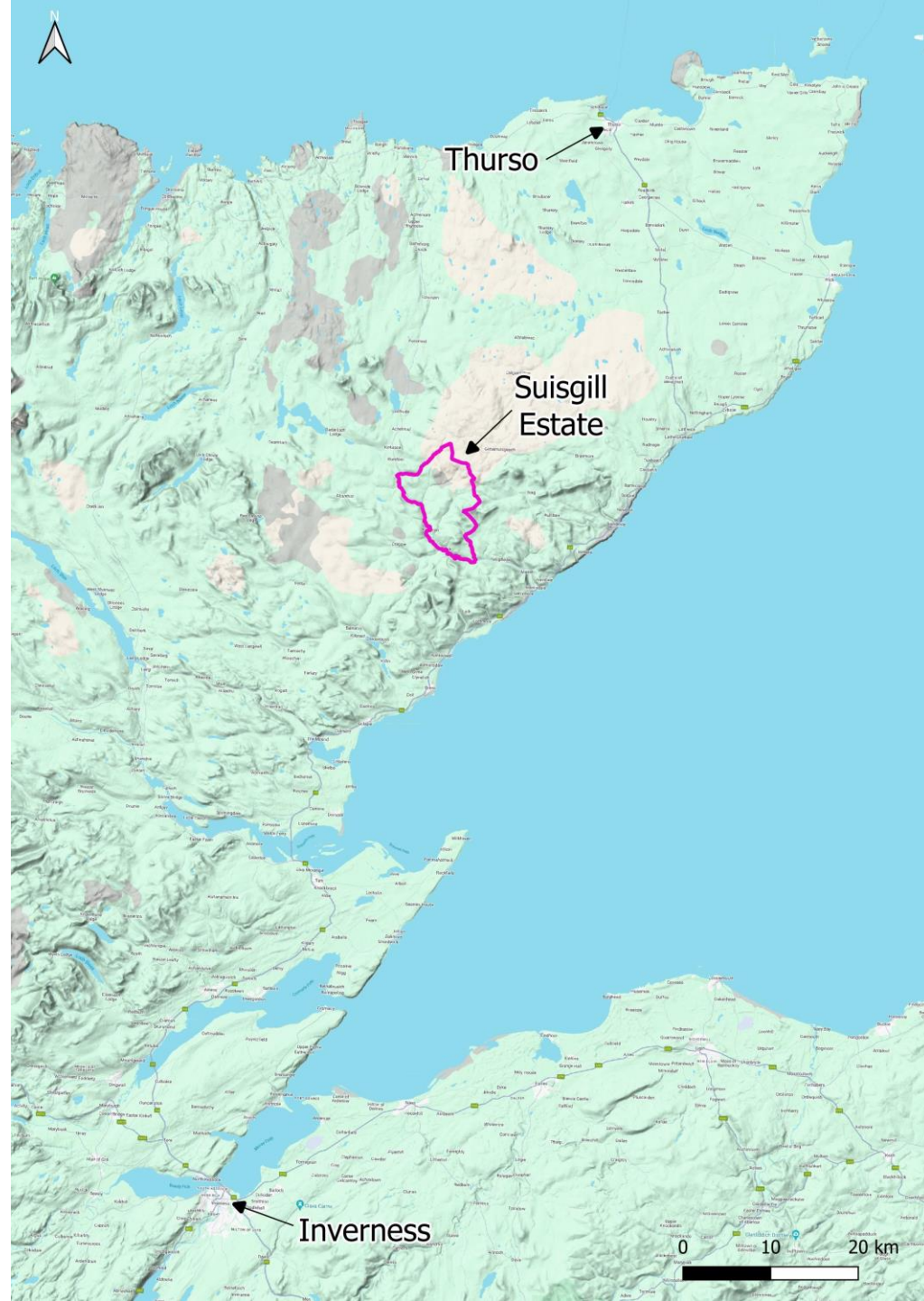


Suisgill Estate





Suisgill Lodge



A.5639.

A GLIMPSE OF THE RIVER HELMSDALE AT SUISGILL LODGE.

Suisgill Estate

- 16,000 acres
- Fishing, $\frac{1}{6}$ share of River Helmsdale
- Stalking
- Walked up grouse over setters
- North Country Cheviot ewes (low ground)
- Blackface sheep (hill)
- Holiday lets
- Venison butchery
- Gold panning
- Peatland ACTION, ACES

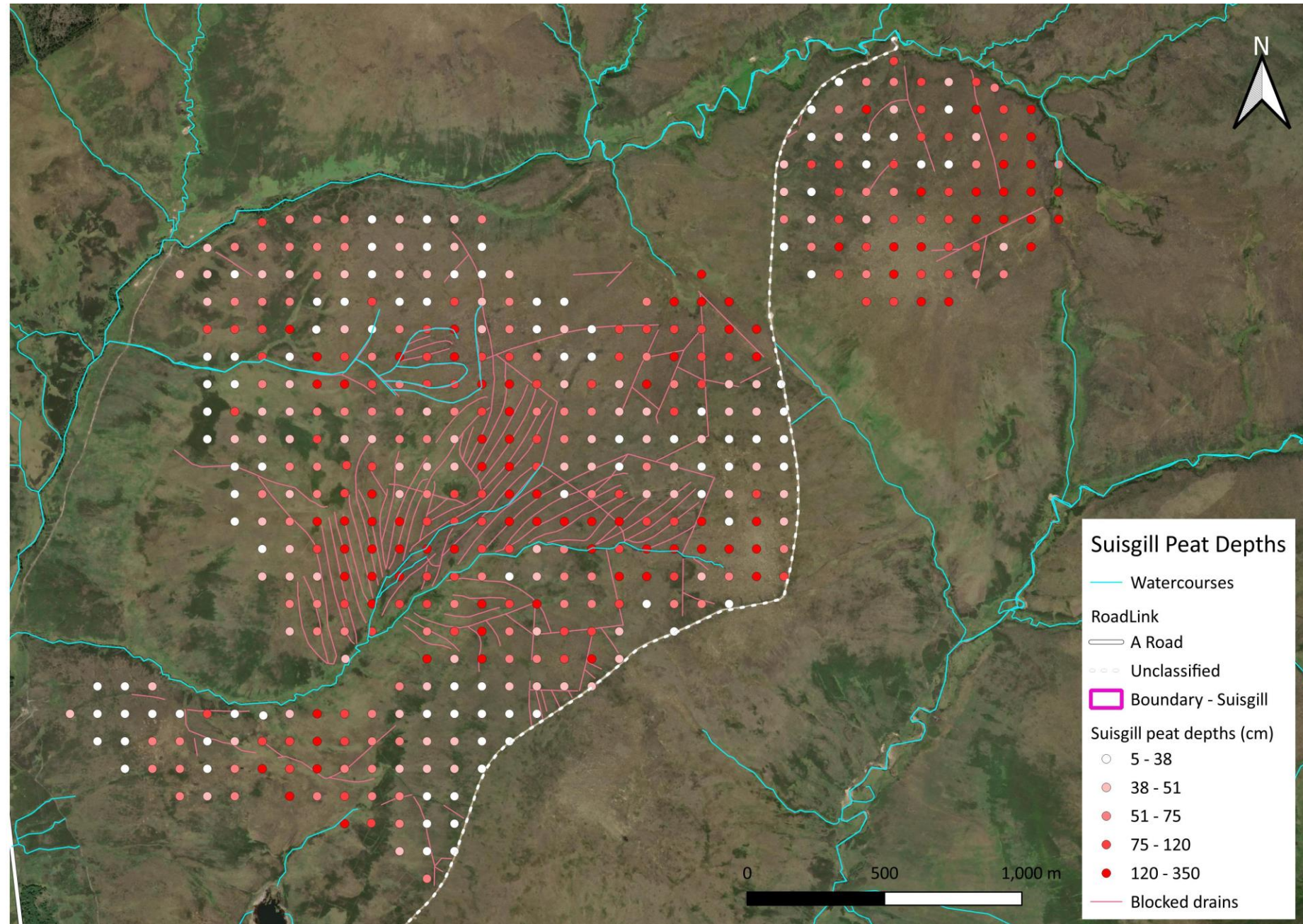


Drain blocking on Suisgill

- ACES or Peatland ACTION???
- Application & project design
 - Taylor Wildlife.
- Restoration contractor
 - John Mackay Ltd.



- Blanket bog.
- Nov - Dec 2019.
- 35km
 - peat dams
 - drain reprofiling
- 1,165 acres.
- Varying peat depth.



Dec 2019



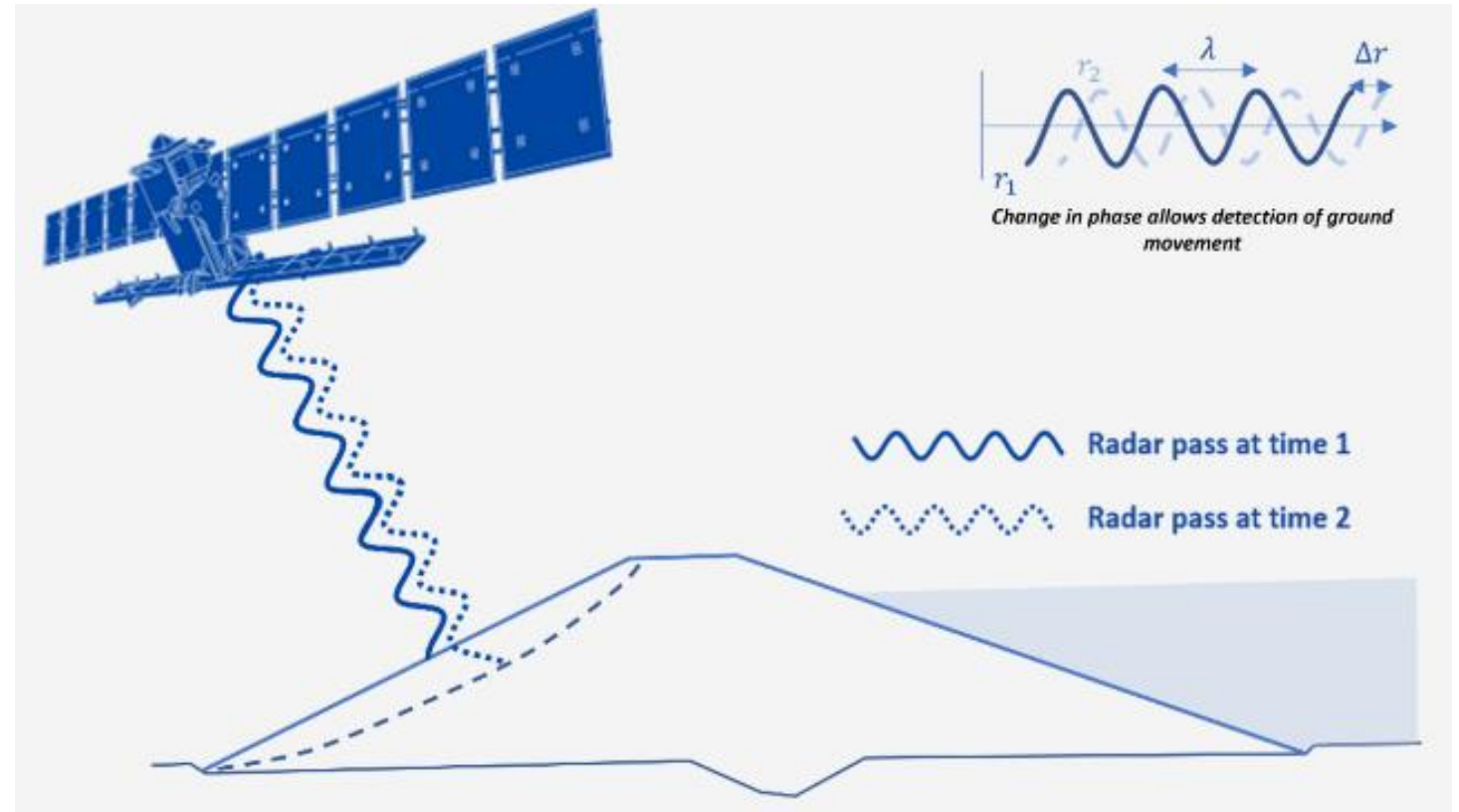
May 2024

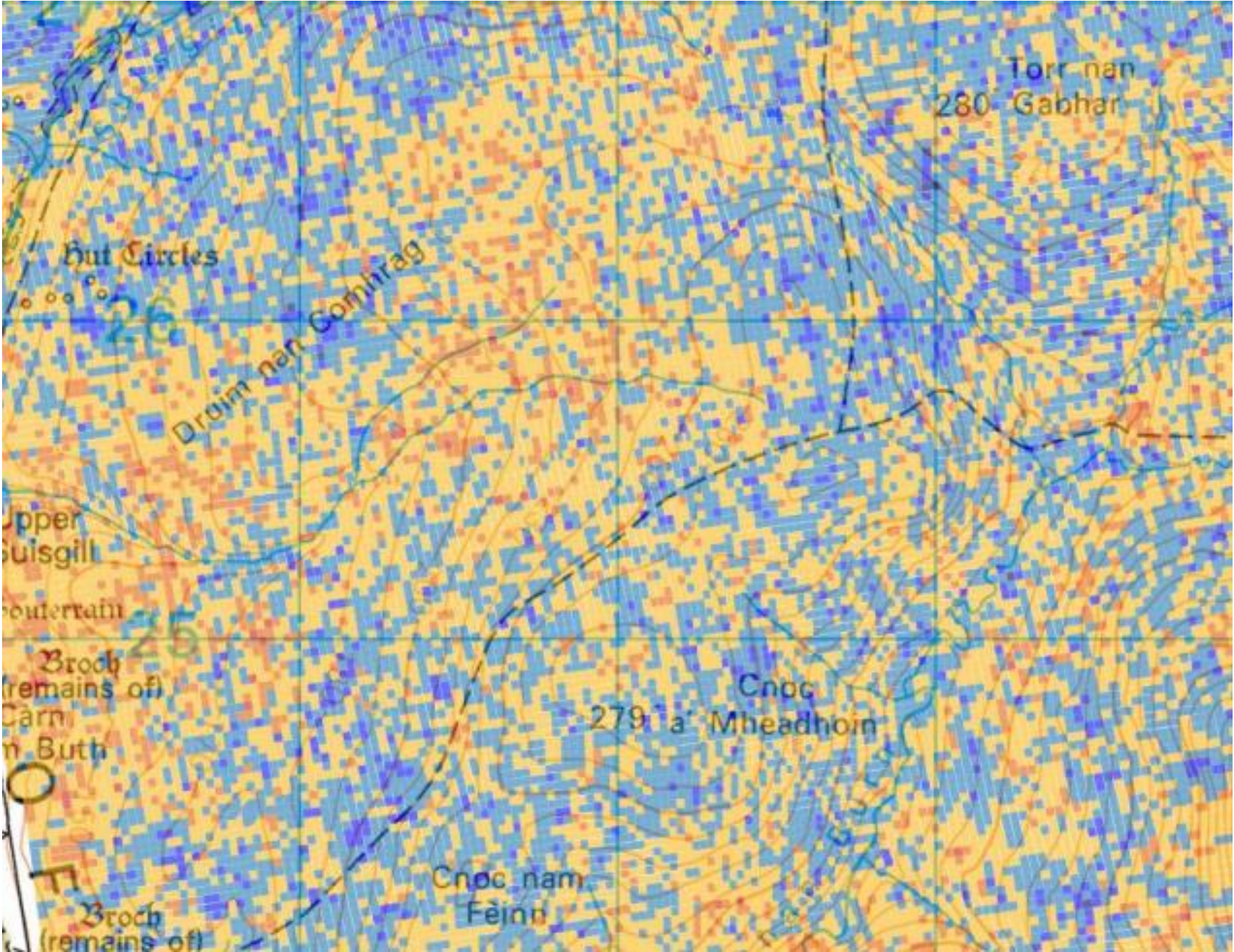


InSAR

Interferometric Synthetic Aperture Radar

- Satellite radar imagery.
- Measures ground movement.
- Compare images over time.
- mm/year precision.





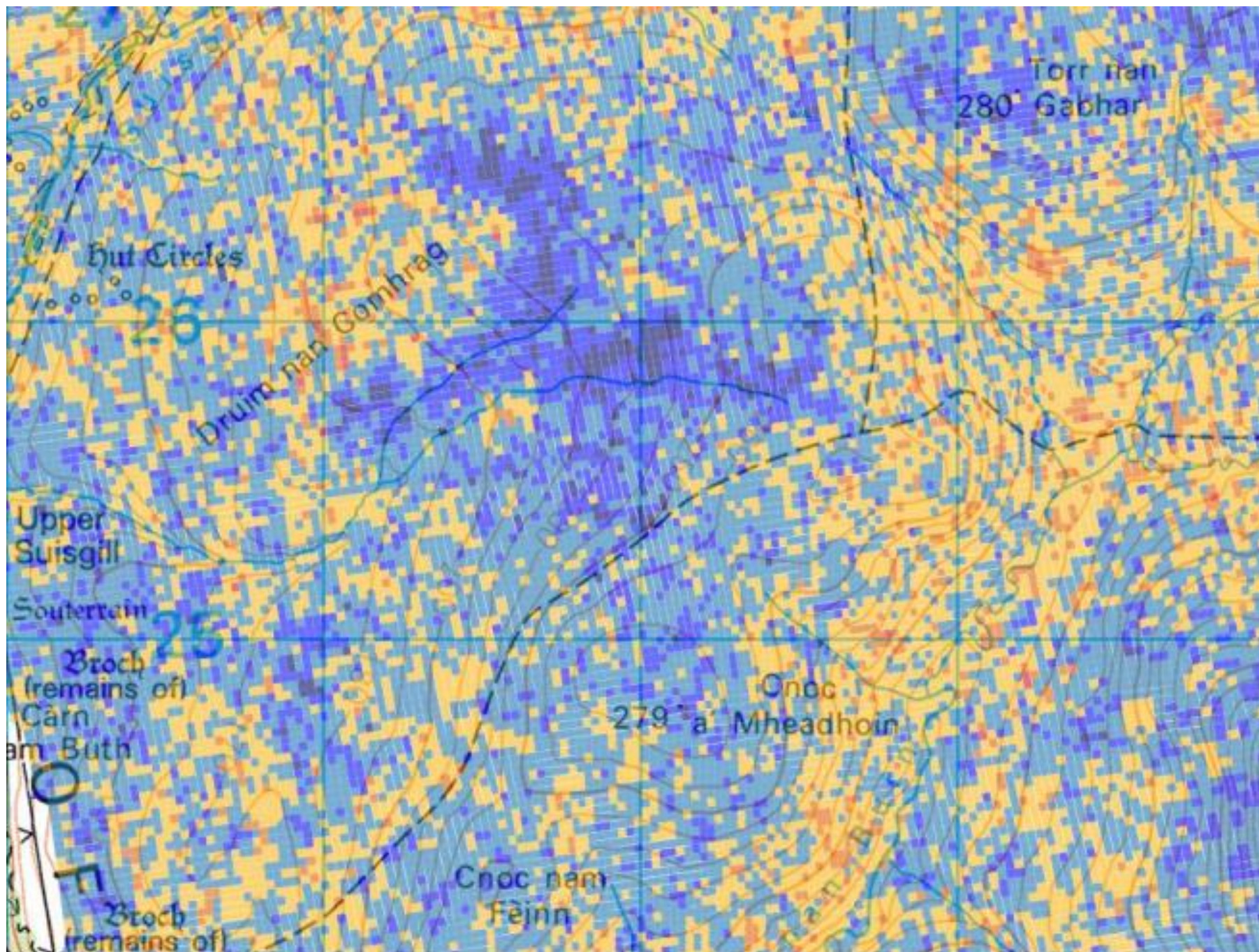
Pre drain blocking



In decline



Positive trajectory



Post drain blocking (1 year)



In decline



Positive trajectory

Planned Forest-to-Bog

Suisgill Plantation

— Watercourses

□ Boundary - Suisgill

RoadLink

— A Road

- - - Unclassified

Unknown

Suisgill peat depths

○ 5 - 38

● 38 - 51

● 51 - 75

● 75 - 120

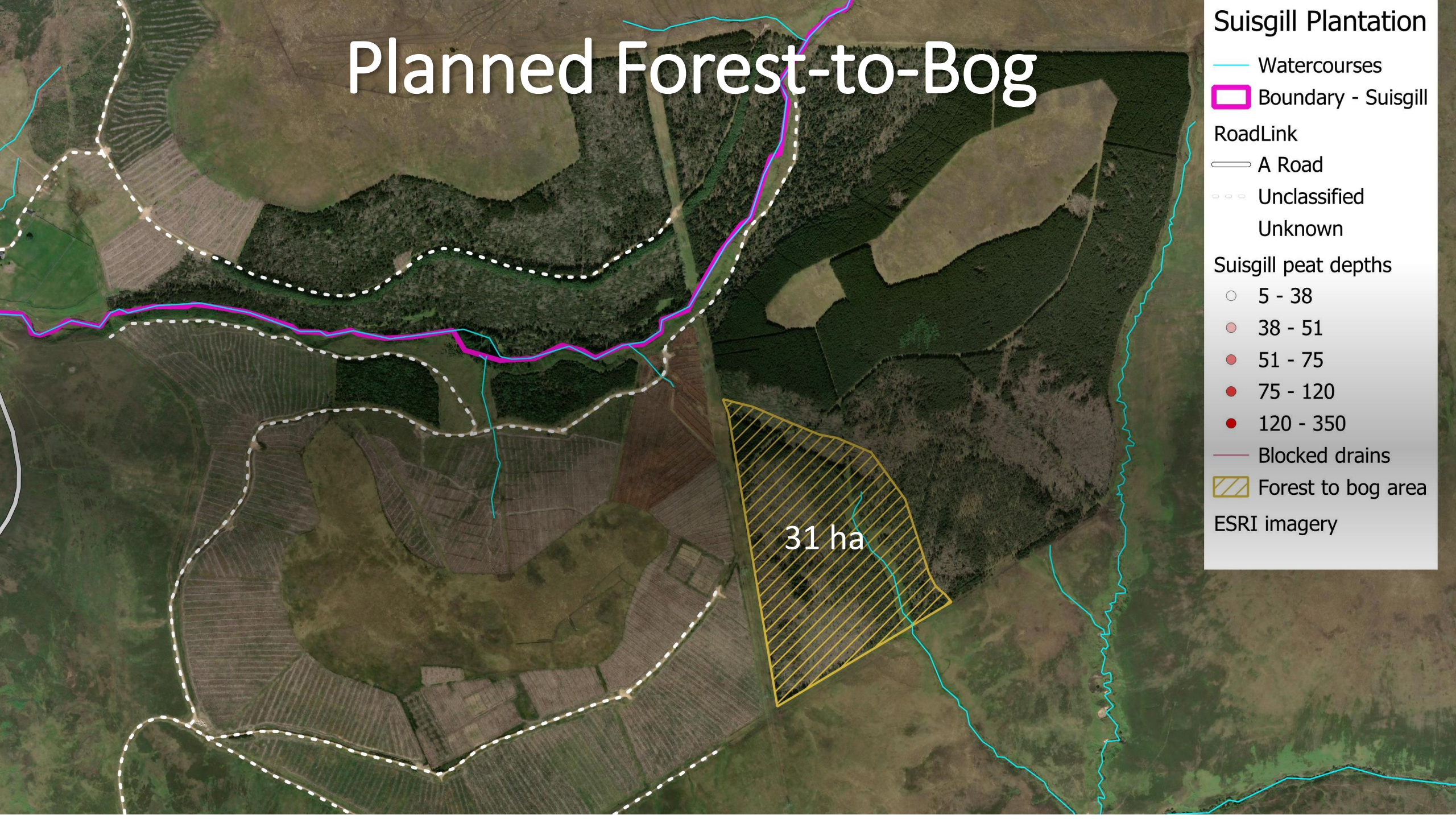
● 120 - 350

— Blocked drains

▨ Forest to bog area

ESRI imagery

31 ha



Plantation Forestry

- 394.73 ha
- Lodgepole pine.
- Protracted felling
 - Haulage restrictions.
 - Estates collaborate.



Brash mat examples

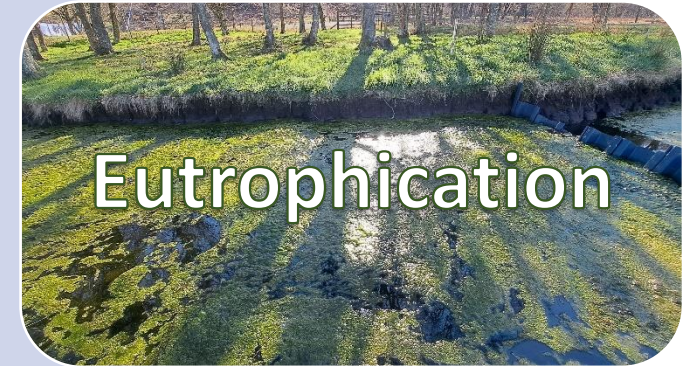


Brash Management

Brash mats left in situ

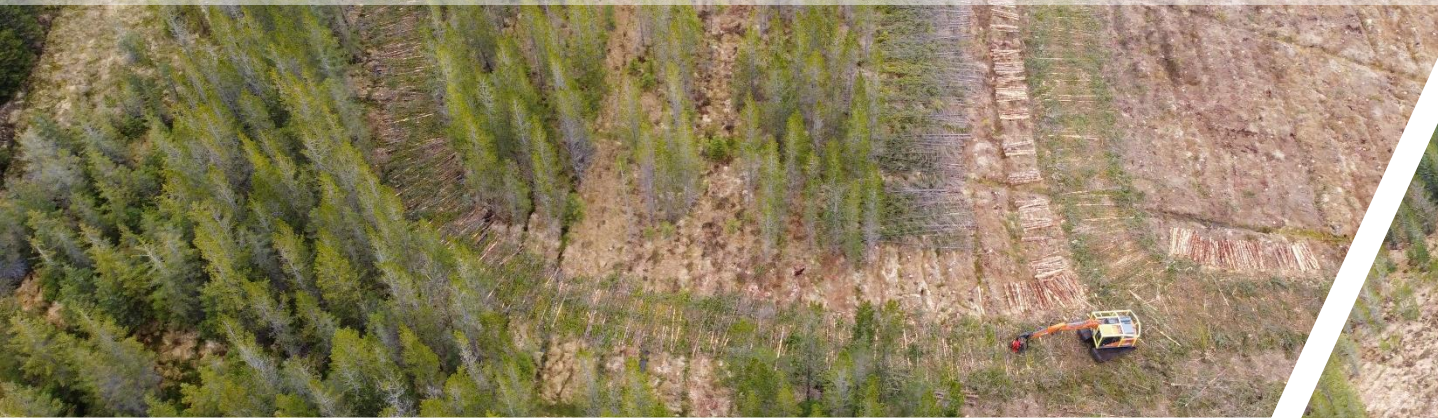


Why manage brash?



Negative impacts of decomposing brash

Process of felling multiple drifts into one

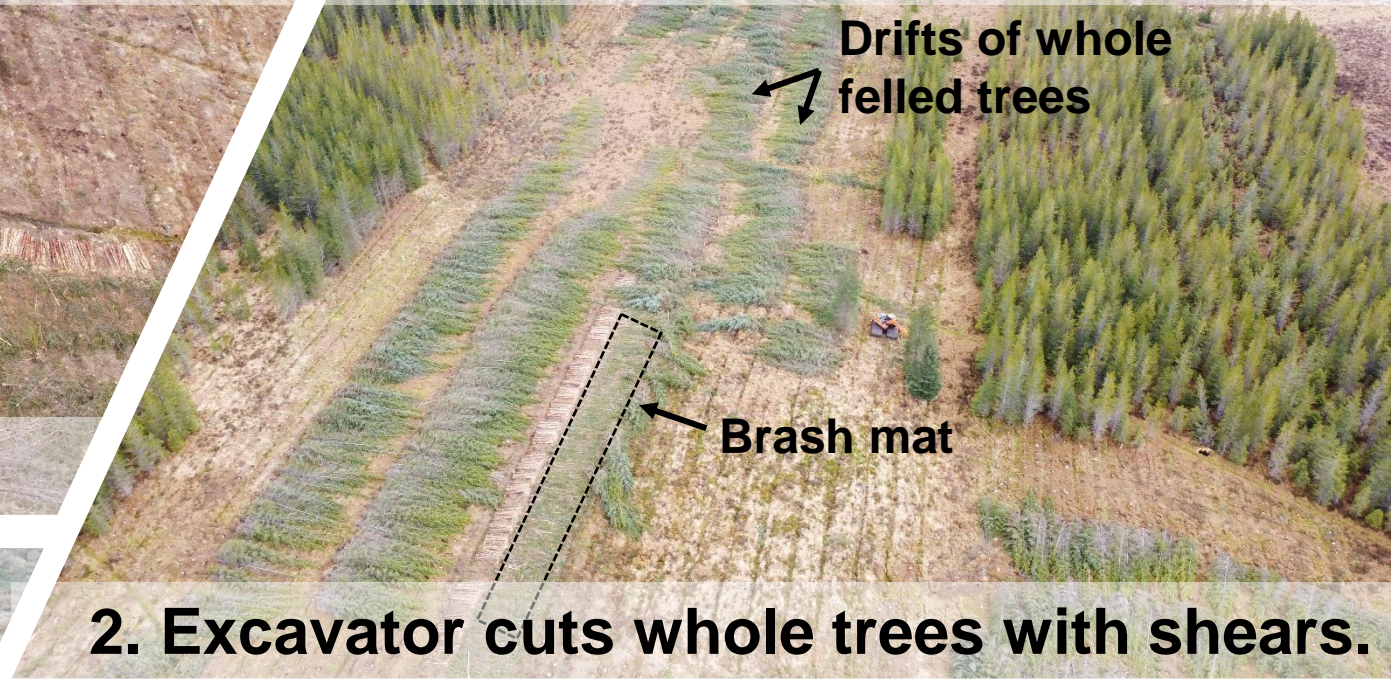


1. Access route cut conventionally.

Results in...



Low stumps, no visible damage.

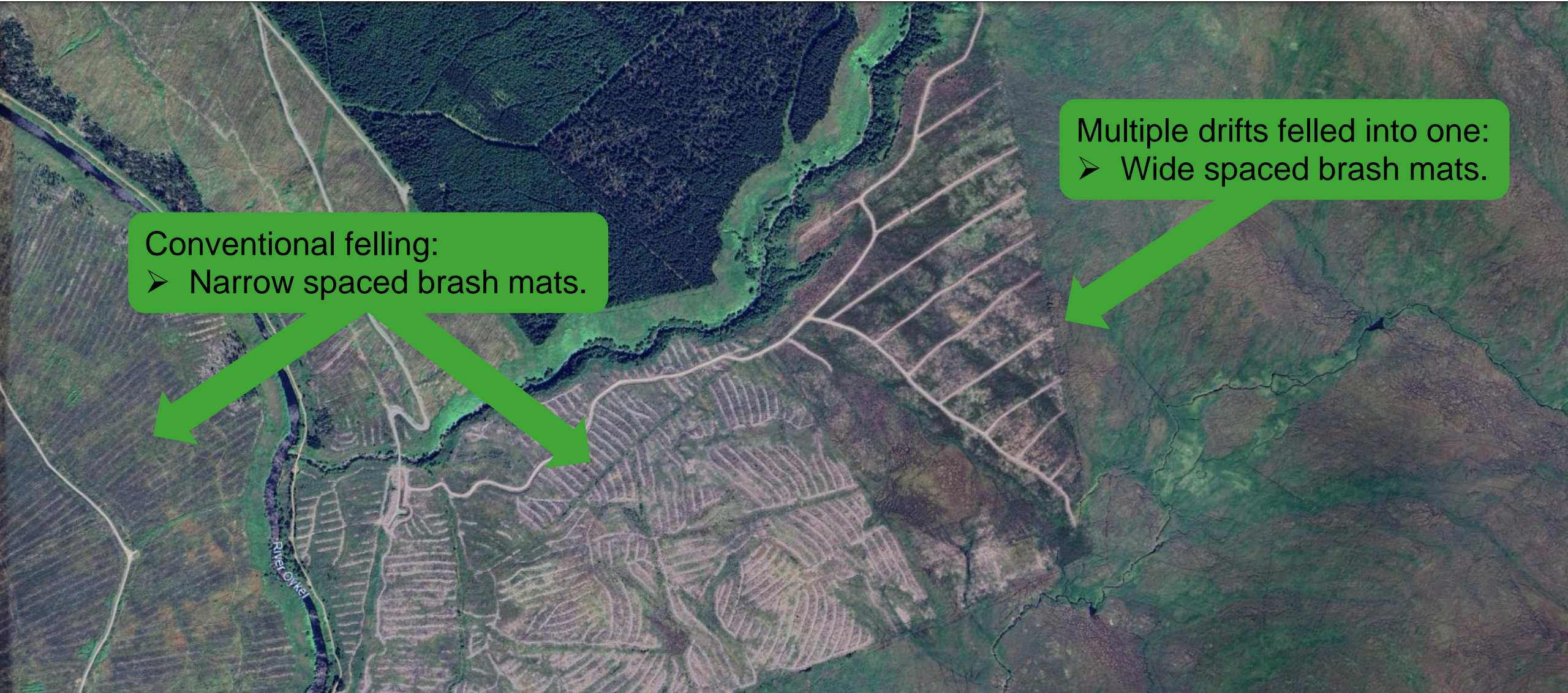


2. Excavator cuts whole trees with shears.



Widely spaced brash mats.

Multiple-into-One vs Conventional



Peatland Restoration



Mulching



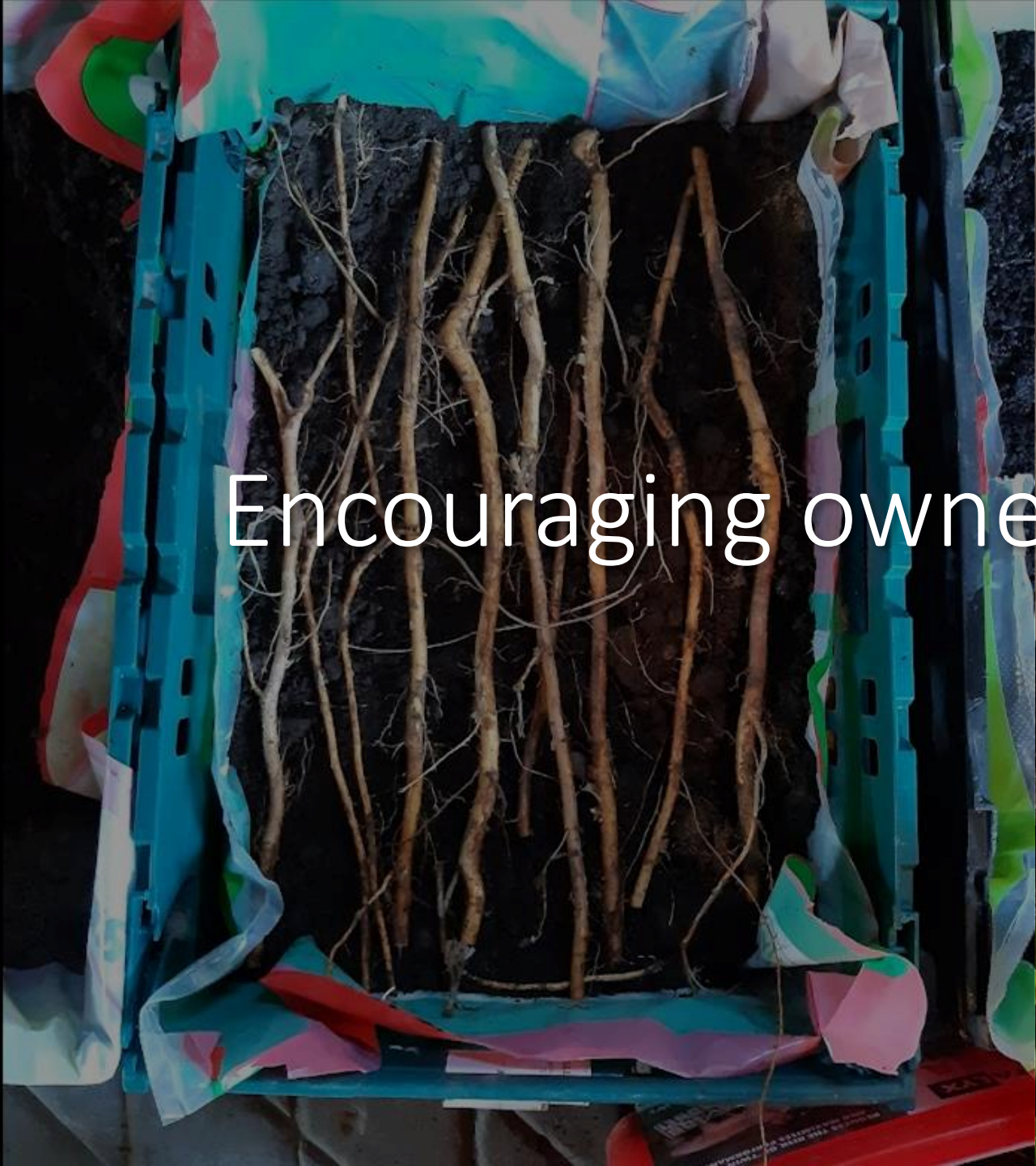
Multiple drifts into one



Ground smoothing



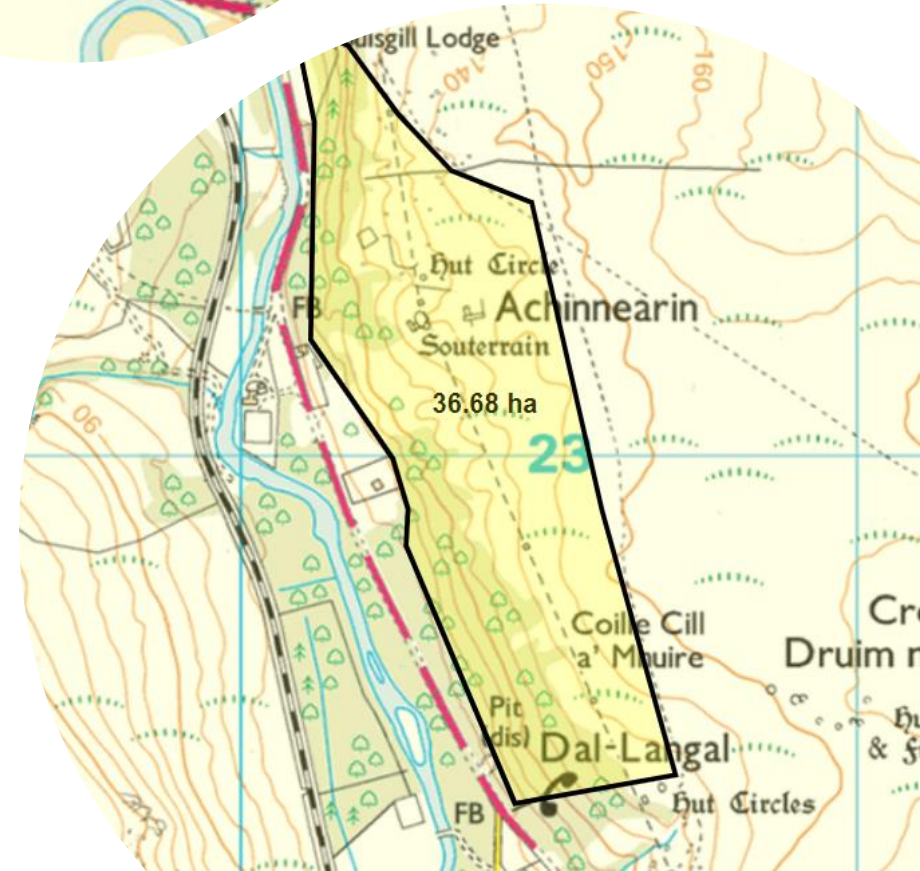
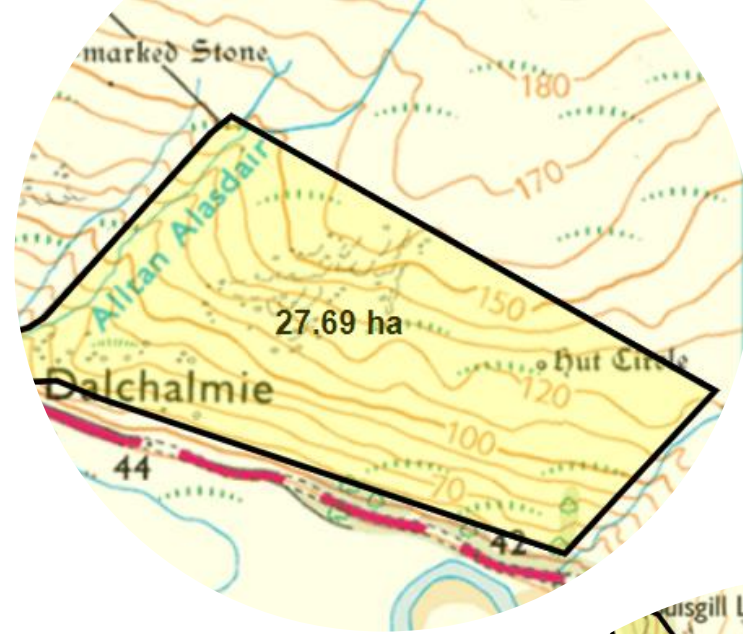
4 years post ground smoothing



Encouraging owners to plant natives

Native woodland creation

- Multiple areas of different ages.
- New planting of native species.
- Regeneration of established natives encouraged.
- 27.69 ha
- 36.68 ha



Deer Management

- Deer management group
 - 28 Estates
 - 5 subgroups
- Count numbers
 - Foot: 469 Spring 2024
 - Helicopter: 773 Spring 2023
- Cull numbers 2023/24
 - Suisgill: 266
- Habitat impact





Sheep Management

- Tick control.
- 600 breeding ewes
Black faced.
- Ewe lambs away for
winter.
- Ewes stay on hill all
year round - hefting.



Venison

- Price of venison
- Estate butchery
 - Certification inconsistencies
- Game dealers & assurance schemes
- Customer base



Licencing changes

- Stag season
- Trapping rules
- Grouse
- Muirburn



A black and tan dog, possibly a pointer or similar breed, stands in a field of tall, dry grass and purple heather. The dog is looking towards the right side of the frame. The background shows a vast, open landscape with rolling hills under a cloudy sky.

Walked up grouse

About the day, not the bag.

Muirburn

- Fire breaks
 - Wildfire
 - Muirburn
- Habitat management
- Swiping
- Burning
- Equipment



Thank you
for listening

Baile an Or
Great Sutherland Gold Rush of 1869

Klaus Olofsen
klaus@suisgill.co.uk

Anna McWilliam
anna.mcwilliam@uhi.ac.uk

